



**MODERNISM  
WEEK  
2020  
TWIN PALMS  
HOME TOUR**

## Welcome to Twin Palms



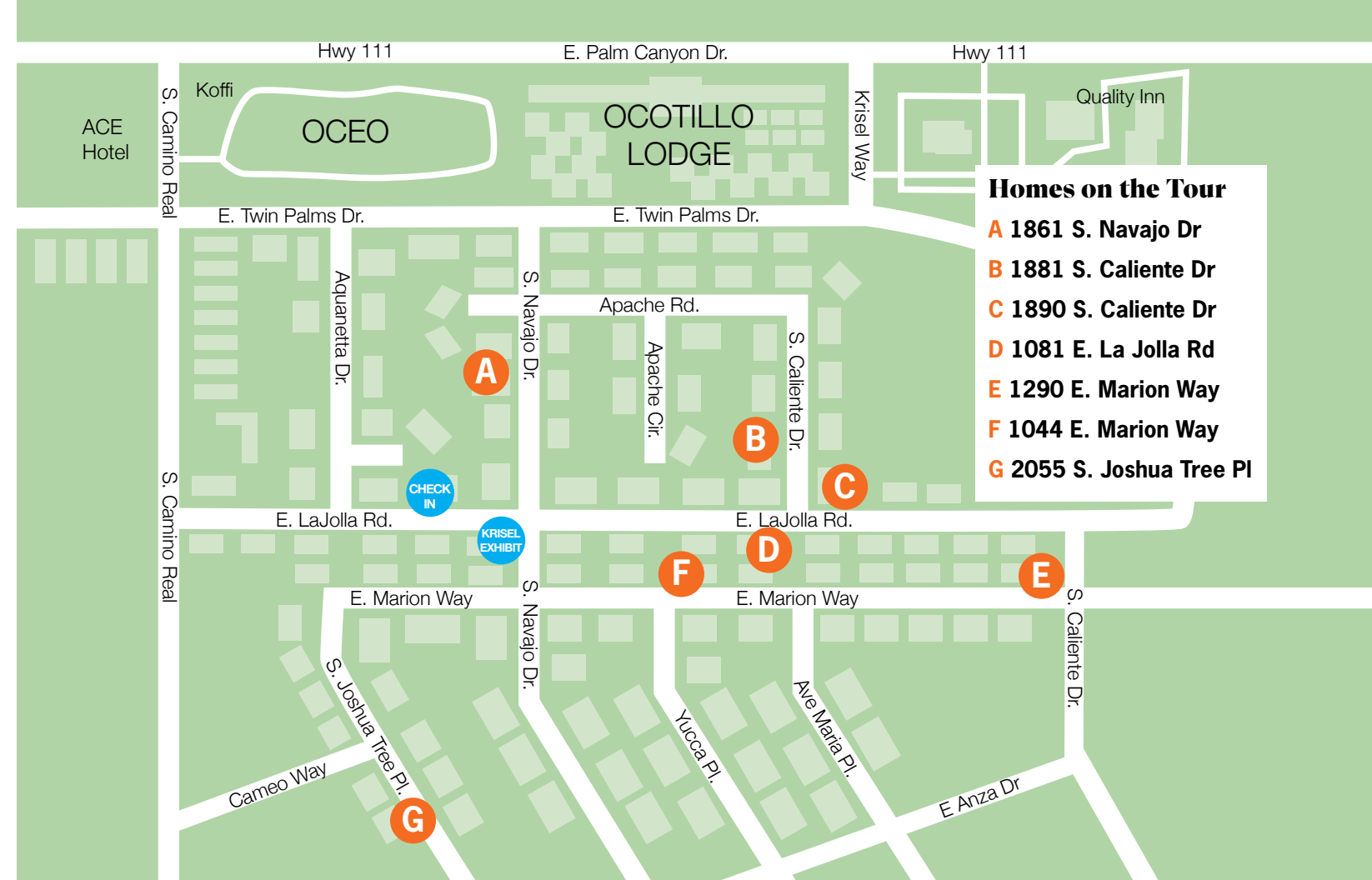
**William Krisel, left, and Dan Palmer in 1957. Their firm designed the Ocotillo Lodge and Twin Palms Estates.**

*Photo courtesy the Huntington Library*

This year we are excited to share with you an all new lineup of homes on our unique tour. These properties represent some of the finest cross section of mid-century design and style within Twin Palms. We are also pleased to include vintage automobiles this year. Our selection of cars was based upon the era of the homes to enhance the experience. Just another typical day in the neighborhood!

Also, we can't minimize the impact Robert Alexander and William Krisel had with the completion of the Ocotillo Lodge in 1956. The Lodge provided a showplace to welcome home-seekers looking for new and distinctive residences. Open carports, clerestory windows, exposed concrete block, floating fireplaces, and breezeways are all part of this collection of homes. Modernist design elements established Twin Palms as Palm Springs first modern tract.

Today, 64 years later, Twin Palms enjoys a population mix that reflects the diversity and spirit of Palm Springs. Welcome to our neighborhood and enjoy our aesthetically distinctive homes and automobiles that call to the past while embracing the future.







## **A 1861 S. Navajo Dr**

Our journey began January 2019 as we previewed many properties. We decided on Twin Palms because of proximity to cafes, restaurants, and pristine homes. The neighborhood makes us smile as we walk by architecturally preserved mid-century time capsules. We love seeing the desert wildlife including road runners, lizards, hummingbirds, and even a coyote from time to time.

Our home has been updated to a larger one-story floorplan which easily accommodates our family of five plus a few friends. I get to cook in the large open kitchen and still be part of the action. Our place is ready for family fun! Please make sure to take in the mountain views! Today the clouds might be rolling over the top of the mountains while tomorrow we see snowcaps. We love Palm Springs with its many activities and community. We might have found our forever home. We hope you enjoy our home as much as we do!







## **B 1881 S. Caliente Dr**

In 2008, we purchased our Alexander. We quickly realized how William Krisel architecture made living better. But with countless electrical and plumbing problems and when our kitchen cabinets fell from the wall—we realized after 60 years and bizarre renovations from past owners, it needed serious attention to survive.

We wanted to be true to Krisel's design, but also incorporate modern living. Our home had stood for 60 years and we made it our vision that it will stand for 60 more. We took it back to the studs, replacing electrical, plumbing, heating/AC, roof and windows, leaving the original design intact. We restored the pool and added a spa. The garage was in such poor shape, we rebuilt it. We added a casita so guests could awaken to mountain views.

Now our Alexander's beauty is restored. Today, we enjoy mid-century living, eloquently planned and designed for us 63 years ago.







## **e 1890 S. Caliente Dr**

We live in New York City and fell in love with Palm Springs during a trip in 2014. In thinking about purchasing a retirement home here, we quickly targeted an Alexander home in the Twin Palms neighborhood. In 2018, we were thrilled to find our home at 1890 S Caliente, one of five of the B3 flat roof model built in the first phase of the Twin Palms development with beautiful unobstructed views of Mt San Jacinto. The previous owners had lived there over 40 years and left the original finishes mostly intact. There was an addition to the back of the house house built in 1958 which we were able to covert to a casita. We finished a restoration of the home in the Fall of 2019. We are excited to have brought back the original mid-century appearance of house and contribute another restored Alexander to the wonderful Twin Palms neighborhood.







## **D 1081 E. La Jolla Rd**

I lived in a mid-century home in Seattle a number of years ago and it's been my dream since to own a mid-century modern home. Palm Springs has always attracted me, although I never spent any time here until just two years ago. I fell in love with the Twin Palms neighborhood last February on this same neighborhood tour. Fast forward to June 2019 and my dream came true when I bought my home and launched a major renovation. The house had been updated over the years so it wasn't a question of keeping original surfaces, but bringing out the incredible bones of the house: opening up the living space and incorporating design materials that reflect the mid-century esthetic. I love the indoor/outdoor lifestyle, the privacy of the property, the beautiful mountain views and great Twin Palms neighborhood.







## **E 1290 E. Marion Way**

Owning several mid-century homes back in Florida, we searched in the general Palm Springs area for nine months and while we were fully expecting to end up with a Krisel-designed home, this home came as a very pleasant surprise. Owned by the same family since the 60s, the home was akin to a time capsule. We quickly began restoring the home but remained respectful of the original surfaces and layout. What a delight to walk onto the patio for the first time and see the generous unobstructed mountain views. We were so thrilled to have a split bedroom plan that we could not have had with a Krisel home. Designed in 1959 by a local designer (there were several working in Palm Springs at the time), for Honolulu businessman Ned F. Smith and his wife Helen, this unique home was ultimately built by famed mid-century local contractor Thor Frederickson.







## **F 1044 E. Marion Way**

Built in 1963, 1044 E. Marion Way was designed by Clare Philip Earl of Earl and Brock, AIA, Architects, whose Daily House in Glendale California is listed on the Glendale Register of Historic Resources. Earl also designed three houses on LaVerne Way in Twin Palms, one of which was featured in a Modernism Week 2018 home tour. Earl's Marion Way house features classic mid-century design elements including terrazzo floors with built-in planters, a sunken living room with a wall of glass, a floating central fireplace and unique brise soleil block work. Late-era renovations include a gourmet kitchen addition expanded from the original galley, a carport turned garage, new bathrooms and owner-designed iron gates. The house has been lovingly restored since the current owners bought it in 2015. The property was also newly landscaped and hardscaped in 2019.







## **G 2055 S. Joshua Tree Pl**

Time stopped in 1964 for this glorious mid-century home when it was decorated by Vera Seidner, the wife of owner and local builder Milton Seidner. Louis XIV himself would be envious of the Bougainvillea pink master bedroom and its terrazzo sunken bathtub. Look hard enough and you can see the specter of Dean Martin mixing cocktails behind the wood-paneled bar! Designed by Los Angeles architect Cary Bigman (the Seidners' son-in-law), this fantasy home has only changed hands four times – with each owner dedicated to keeping this candy-colored jewel intact in its original condition. Remarkably well-preserved, from the velvet-flocked wallpaper and the custom furniture to the bedspreads and drapes, we are continuing to refresh and maintain this Twin Palms dollhouse in a way that we hope would win Vera's approval. Despite the home's museum-like quality and elements made fragile by time, the livability of the house is comfortable and cozy to a spectacular degree. We love entertaining here, sharing its grand sense of style and lively spirit with friends and family. The property is a special place that recharges us, relaxes us and inspires creativity.



# The Classic Cars of Palm Springs

Twin Palms residents are some of the car-savviest folks around. Keep your eye out for some carport adornments.



1960 Dodge Polara



**1963 Studebaker Avanti** Designer Raymond Loewy's iconic vision, the Avanti was Studebaker's last roll of the dice, and with it the eccentric 100-year-old company excelled itself. While it would be built for an astonishing 40 years by a string of die-hard enthusiasts, the 1963-64 originals are the purest examples. The wasp-waisted sports coupe featured a grille beneath the front bumper and a fiberglass body on a separate chassis.



**1955 Packard Patrician Sedan** Packard introduced the John Reinhart-designed 24th Series Patrician 400 sedan in August 1950 as the top-of-the-line Custom Eight replacement. The car was a departure for Packard, utilizing a 'three-box' shape that was much more contemporary and modern looking.



**1952 Kaiser-Frazer Manhattan** In 1951, Frazer debuted a new design that would continue until the company's end of U.S. passenger car production in 1955. Designed by Howard "Dutch" Darrin, the cars were longer, lower, and swoopier. The top-of-the-line Manhattan cost just over \$3,000, and fewer than 300 were produced in all.



**1962 Oldsmobile F-85 Cutlass** The first production Oldsmobile Cutlass was a pillared deluxe coupe version of their new-for-1961 unit-body F-85 "senior compact." Olds had earlier used the Cutlass name on a 1954 Motorama show car. A 185-hp high-compression 215-cid "Rockette" aluminum V-8, equipped with a 4-bbl. carburetor, powered the Cutlass. Upgraded exterior trim was featured outside. Inside, a richly detailed two-tone vinyl-trimmed interior with front bucket seats was standard.



**1966 Chrysler 300** Chrysler created some of the most exclusive blends of luxury and performance in all of America. The Chrysler letter series set speed records in Daytona and were driven by some of popular culture's coolest customers. The 300's rear fenders were shorn of fins, and the front carried angled headlights and a cross-hair grille, all of which echoed the letter car's looks.



**1957 Chevrolet BelAir** Chevrolet's V-8 models continued turning up the heat as the '50s rolled on. In 1957, the big news beneath the hood included a displacement increase as the 265 was bored out to 283 cubic inches. A 162-horse 265 V-8 remained available that year, but much more popular was the new 283, which started at 185 horsepower with a two-barrel carburetor and single exhaust.



**1956 Lincoln Premiere** The Premiere was Lincoln's flagship. The car carried bright colors, more trim, and a number of safety features, like deep-dish steering wheel, padded dash, seat backs and door panels and better door latches. It was expensive, too, with a hardtop coupe, a four-door sedan, and a convertible all ranging between \$4,600 and \$4,750.



**1969 Rolls Royce Silver Shadow** The Rolls-Royce Silver Shadow was a striking change from the Silver Cloud that preceded it, which was smaller and square. There would be only 35 two-door coupes by James Young, as well as 571 coupes and 505 convertibles by Mulliner-Park Ward. In all, 16,717 factory-built standard steel saloons and 2,776 long-wheelbase models were manufactured.



## Thank you to the following:

Without your talent, support and dedication our tour would not be possible.

### Modernism Committee members:

STAN SARTOR - Chair

ALAN BEARDSLEE - Vice Chair, Operations

LARRY JOHNSON - Finance

MICHELE JOHNSON - Volunteer Coordinator

JAN SARTOR - Lead - Reception Desk

JIM HIGH - Design Lead, Publishing Lead

SHANNON METCALF - Marketing, Social Media

Photography: CLARK DUGGER

Graphic Design: HENRY CONNELL

### Tour Homeowners:

ALAN BEARDSLEE and ALEX QUINTANA

CHAD BURRIS and JULIE BURRIS

JEFF HOFFMAN and HORACIO ORANTES

STEPHANIE MOLTER and TOM MOLTER

CAROL MUNRO

GARY OSIFCHIN and WES WOLFE

ALYSSA SLANGA and JAKE WISELY

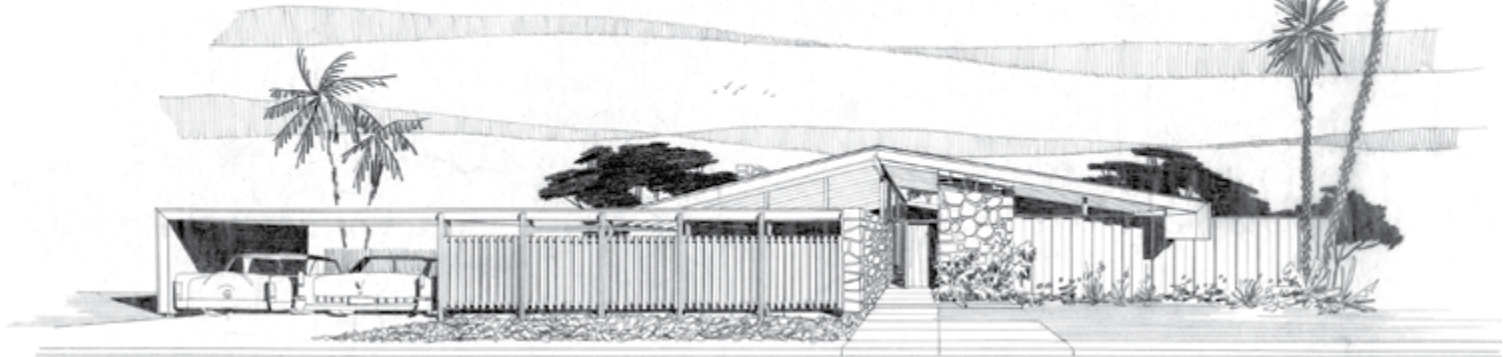
...and to all our Twin Palms Volunteers!

## Special Thanks to:



modernism week®

Official Modernism Week Event



*Twin Palms rendering from the Palmer and Krisel office circa 1957*